

# *Our* Berryfields

SPRING 2025

VISIT [BERRYFIELDSPC.ORG](http://BERRYFIELDSPC.ORG)



**Berryfields**  
Parish Council

# Useful contacts

## Parish Clerk

Anthea Cass CILCA  
clerk@berryfieldspc.org  
01296 925750

## Deputy Clerk

Sarah Tomlin  
01296 925750

## Hall Bookings

Lisa Gibson  
booking@berryfieldspc.org  
01296 925755

*Advertise  
with us!*

1/4 page - £50 + VAT

1/2 page - £100 + VAT

Full page - £200 + VAT

If you are running a business and would like to advertise with us, please contact  
[news@berryfieldspc.org](mailto:news@berryfieldspc.org)

## Share your passion with our community

Do you have a hobby, talent or interesting story you would like to share? We're looking for residents to contribute to **'Our Berryfields'** quarterly magazine!

Whether it's a fascinating travel story; an editorial about your favourite hobby; a personal journey or inspiring experience; promoting the successes of Berryfields and your fellow residents; or a creative piece (poem, artwork, or short fiction) - we want to hear from YOU!

### Submission Details:

- Attach high-quality photos if relevant.
- Deadline for submissions: **17th June 2025** for the July issue.
- Email submissions to: [ourberryfields@berryfieldspc.org](mailto:ourberryfields@berryfieldspc.org)

Let's make our community magazine a reflection of our diverse and vibrant neighbours!  
Contact the office **01296 925750** for further information. We can't wait to read your stories!

## PARISH COUNCIL RESPONSIBILITIES

The Parish Council is point of contact and liaison between residents and the Consortium

Will own & Manage:  
Open Spaces, playgrounds and ditches  
(to date approx 30% have been adopted. Remainder due to be adopted and are currently under the management of the developers)

Liasing with  
Developers & other  
Key Stakeholders

Roman Park Hall:  
Hall hire and  
ongoing park  
projects

Grass cutting,  
maintenance and  
repair (on adopted  
land)

Dog Poo and Litter Bins  
(except for those on  
Bucks land)

Annual audit and  
compliance with  
regulations

Regular safety  
inspections of all  
playgrounds

Managing tenders,  
due diligence &  
appointment of  
contractors



Parish Office Main contact:  
[clerk@berryfieldspc.org](mailto:clerk@berryfieldspc.org)  
01296 925750

Parish Events  
including:  
New Year's Party  
Christmas Afternoon  
Senior Tea,  
Santa's Grotto  
Children's summer  
events  
Regular community  
events

### Community grants

Professionally  
qualified staff,  
Parish Council  
holds General Power  
of Competence.

Day to day  
management of  
the Parish,  
all assets, staff  
and contractors.

Management of the  
Parish budget,  
precept and  
statutory duties &  
powers.

Roman Park  
Food Bank

Statutory  
consultee of  
planning  
applications.

## Buckinghamshire Council is responsible for...

Medical Services  
Household bin collections & recycling  
centre

Roads & Pavements (subject to adoption)  
Schools

Planning Authority  
Adult Social Care  
Children's services

[www.fixmystreet.com](http://www.fixmystreet.com)

[www.findmystreet.co.uk](http://www.findmystreet.co.uk)



ROMAN PARK HALL

# YOUTH CLUB

7.00 PM - 8.30 PM

GAMING | TABLE TENNIS | ARTS & CRAFTS  
TUCK SHOP | MUCH MORE!

**£2 ADMISSION**  
AGES 11 - 14

**UPCOMING DATES:**  
FRI 4 APR, FRI 2 MAY, FRI 16 MAY,  
FRI 13 JUN AND FRI 27 JUN

TO SIGN UP AS A VOLUNTEER TO HELP RUN THE GROUP PLEASE CONTACT:  
**YOUTHCLUB@ROMANPARK.ORG**

ROMAN PARK HALL - SIR HENRY LEE CRESCENT HP18 0YT

More Horizons Holistic way for a better you.

IN PARTNERSHIP WITH

ROTHSCHILD FOUNDATION


## BOLLYWOOD DANCE WORKOUT SESSIONS

**(Ladies Only)**

Dance to Bollywood music to boost your energy & mood, and get Fit!

EVERY THURSDAYS @ 6 PM (45MINS)  
LOCATION: AYLESBURY VALE ACADEMY  
PARADISE ORCHARD, AYLESBURY HP18 0WS

**Admission FREE - Pre-Booking required**



For booking form please email:  
**info@morehorizons.org.uk**  
**Mobile: 07587459073**  
**www.morehorizons.org.uk**




### COMMERCIAL & RESIDENTIAL ELECTRICAL SPECIALISTS

- ⚡ REWIRES & EXTENSIONS
- ⚡ ADDITIONAL SOCKETS & LIGHTING
- ⚡ EV CHARGER INSTALLATION
- ⚡ OUTBUILDING & GARDEN ELECTRICS

- ⚡ SMART HOME ELECTRICS
- ⚡ FUSE BOARD UPGRADES
- ⚡ FAULT FINDING & REPAIRS
- ⚡ SECURITY LIGHTING & CCTV SYSTEMS

 Berryfields, Aylesbury

 07538185864

 hello@phaseco.co.uk

 www.phaseco.co.uk



## Finding Pea's of mind *by Lucia McGuffie*

In my wildest dreams I never thought that I would have an allotment, but due to a crossroads in my life I found myself one evening applying for a plot.

The next thing I knew... I've been allocated to the plot and was knee deep in mud and manure! It's amazing how quickly the benefits of fresh air and being in the outdoors can clear your mind of the day-to-day stresses of life.

Being someone who suffers from anxiety, the benefits of having an allotment and the overwhelming satisfaction of seeing your hard work bear fruit at harvest time is for me the best medicine.

So if you are thinking of wanting to apply for a local allotment... go for it, you never know... it may just grow on you!







In February 2024 Green Ridge Primary Academy applied for a grant from the Parish Council to enable the school to purchase a new set of football kits specifically for the girls to use. This was because until then the boys' and girls' teams had to share, and as you can imagine this was not ideal for many reasons!

The grant was awarded, and the school purchased the kits. The girls have proudly worn them at their matches against local schools. Green Ridge Primary Academy would like to thank the Parish Council for supporting our school and the children in our community.



# SAVE THE DATE

BEACON LIGHTING AT 9:30 PM  
AT ROMAN PARK







A family run Children's Day Nursery  
located on Roman Park, Berryfields.  
Close to Aylesbury Parkway Station.



- Ofsted Rated 'GOOD'
- Open 51 weeks a year
- 3 Months to 4 Years
- Funded Places Available



- Strong links with local schools
- Unique experiences
- A safe place to play and learn
- All weather garden



- 42 Place setting
- Fully air conditioned rooms
- Home cooked meals
- Friendly, caring staff



Sir Henry Lee Crescent, Berryfields  
Aylesbury



[www.bigtopnursery.co.uk](http://www.bigtopnursery.co.uk)  
01296 798991



# Big Top Nursery – Roman Park

Sir Henry Lee Crescent (just up the hill past Parkway Train Station)

It has been another busy few months at the nursery. Our children continue to enjoy the many core activities that support their learning and development as well as the many special experiences that we love to provide.

As we move into Spring and the warmer weather, we get excited about planting up our fantastic allotment provided by Berryfields Parish Council. All of the children get the opportunity to spend time visiting the space, with their hard work earning us a 5 star RHS award, as well as producing us with many vegetables for our wonderful chef Kelly to cook for us. The pots, compost and seeds are all ready to go. The beds have been un-covered and are ready for turning. We just need a little more sunshine.

We have also been in touch with our good friends at Merstone Farm Liveries in Quainton. The lambs are due to be born soon, and we will again welcome them to the nursery for a visit. This will give the children a wonderful opportunity to meet them up close and find out more about them. We have also set up the incubators ready for the eggs that will be brought to us for hatching. Last year we were successful in hatching out chickens, but this year, we have decided to have peacock eggs again. It is an amazing experience for the children to be a part of.

We will also be taking the opportunity to take our older pre-schoolers on a visit to Waddesdon Manor over the next few weeks. We co-ordinate our time there with the children from our Big Top Nursery setting in Waddesdon. We are grateful to the Bernie Bus team who help with the transport to visit the beautiful Rothschild grounds.

If that isn't enough, we will have more carpentry sessions with Keith and fire pit sessions with Joe the Nursery Manager. We certainly have a very busy and exciting time ahead. We have a wonderful and dedicated team who work hard to give the children the best start in their learning journey. If you would like to know more about what we can offer at our Big Top Nursery – Roman Park setting, feel free to get in touch. We would love to welcome you, show you around, discuss your childcare needs and share what we can offer.

**To find out more information about all 3 of our Big Top settings visit our website or call us:**

**[www.bigtopnursery.co.uk](http://www.bigtopnursery.co.uk) | Roman Park 01296 798 991 | Waddesdon 01296 658 898 | Buckingham Park 07769 979 593**



**FUNERALS AT**  
*Roman Park Hall*

*Roman Park Hall offers a respectful and comfortable environment for loved ones to come together in a celebration of life. We provide a bespoke service with the aim of relieving as much stress as possible, including:*

- A quiet and peaceful environment, hosting up to 180 guests
- The freedom to decorate the venue to your taste
- Bespoke in-house catering offering afternoon tea, buffet and dining menus, with a choice of both hot and cold food
- A fully stocked, licensed bar
- Outdoor space
- Ample free parking
- Friendly and compassionate staff on hand

*(There is a nearby hotel and trainline for guests traveling from afar)*

For bookings and enquiries, please contact us at [booking@berryfieldspc.org](mailto:booking@berryfieldspc.org) or 01296 925750

Roman Park Hall, Aylesbury HP18 0YT



**KIDS PARTIES**  
*At Roman Park Hall*

*Roman Park Hall is the perfect venue to host children's parties. We offer a bespoke service, including:*

- A spacious hall with room for entertainment
- The freedom to decorate the venue to your taste
- Bespoke in-house catering with buffet options
- Outdoor space
- Ample free parking
- Music facilities
- Friendly staff on hand

For bookings and enquiries, please contact us at [booking@berryfieldspc.org](mailto:booking@berryfieldspc.org) or 01296 925750

Roman Park Hall, Aylesbury HP18 0YT





## Ski Trip to Bormio, Italy – February Half Term

We are thrilled to share with you the highlights of our recent 7-day skiing trip to Bormio, Italy, which took place during the February half term. This unforgettable experience was filled with skiing, adventure, and fun, and we are incredibly proud of how our students represented AVA throughout the entire trip.

Over the course of seven days, our group embraced everything from beginner to advanced runs, with each student improving their skiing skills and pushing their limits. The stunning scenery and well-maintained slopes made for an incredible backdrop, and the students made the most of every day on the mountain.

Beyond skiing, we ensured the trip was filled with exciting activities for all to enjoy. We visited a family friendly spa during one of the evenings and enjoyed a pizza night at a local restaurant, where students savoured authentic Italian pizza and immersed themselves in the local culture. In addition, we made sure to include some winter activities to the itinerary. Ice skating was a firm favourite among the students, and our film and games nights provided the perfect opportunity to wind down and bond after a busy day.

Throughout the trip, the students' behaviour and attitudes were exemplary. They demonstrated resilience, respect and aspiration throughout and we couldn't be prouder of how they represented AVA. Their positive energy and good sportsmanship were evident at every turn, making them true ambassadors for our school.

This trip was about much more than just skiing. It was an opportunity for personal growth, forging stronger friendships, and creating lasting memories in an incredible setting. Our students are an absolute asset to AVA, and their outstanding behaviour and sportsmanship on this trip were a testament to their character.

Thank you to all the parents for your continued support, and we look forward to many more exciting trips in the future.

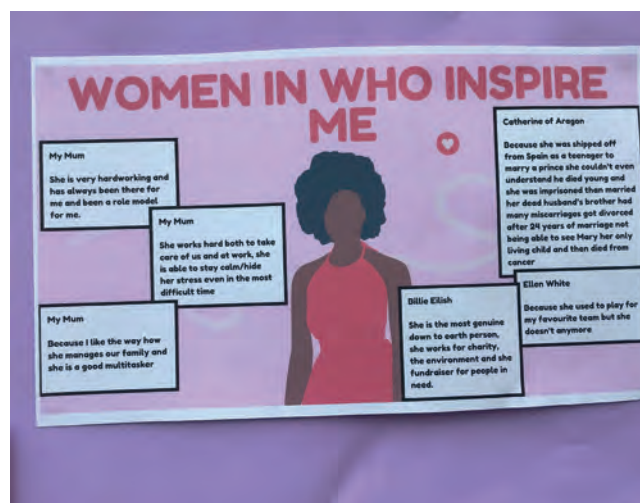


# International Women's Day

This year, we came together to celebrate International Women's Day by pledging our alliance to supporting the females in our school. Our activities were designed to raise awareness, inspire reflection, and support local charity efforts, while encouraging everyone to think about the remarkable women who have impacted their lives.

All week we have been selling purple ribbons in support of Aylesbury Women's Aid. The ribbons not only symbolised solidarity with women in need but also raised vital funds for the charity's important work.

In the atrium, a special IWD Pledge Board was set up, inviting students and staff to write their personal pledges. Many shared their promises to stand for gender equality, challenge stereotypes, and support women's rights, creating a powerful visual representation of our commitment to a better, more inclusive future.



The Culture Club took the opportunity to serve refreshments, raising funds for charity while offering a space for students to reflect on the theme of International Women's Day. Students were also encouraged to write about women they admire, whether public figures, family members, or friends, highlighting the diverse and empowering contributions of women to society.

Thank you to everyone who participated and contributed. Your efforts helped us celebrate and honour the achievements of women, while also supporting our local community. Let's continue to inspire positive change every day!



**The Big Legal Lesson**  
February 2025

## The Big Legal Lesson

In February our students participated in our annual Big Legal Lesson. This year, we focused on the Fundamental British Value of the Rule of Law, exploring the question: **What's the law got to do with me?**

Students followed a fictional character named Marley as he guided them through his day. In groups, they identified the laws that shaped his experiences, including the Equality Act, School Premises Regulations, and the Online Safety Bill, among others.



## Lionesses Rise to Glory *by Madi Bradley and Jess Carter*

As the world celebrates International Women's Day we can't ignore the huge achievements in women's sport especially strong females like the England Lionesses who have been the main force of the movement. Every match, every victory, and every challenge they faced, these women did not just rewrite the history of football, but they also proved stereotypes wrong which have kept woman from playing in the game for many years. This victory is not only a triumph to this generation of female footballers, but the retired lionesses also saw this as their win too, after the ban of women's football in 1921. This team is the definition of women in sports overcoming adversity.

During the late 1900's, was when the nation saw the rise in females wanting to play the same level of sport as the men, but this wasn't very popular to everyone else. In 1972 the lionesses formed their first official women's team, and years later in 1984, the first euros took place for females. However, they struggled finding support from the country, funds from the government and media coverage for matches. Even when the women's teams asked the FA to find pitches to play on, they gave them grounds that would be below standard, they only had the wings to run down as the rest of the pitch was flooded – this is unacceptable to play on present day!!

Thankfully the 2022 euros flipped all of these factors completely, proving that women's football is no longer a secondary consideration but plays a significant role in many people's lives. The lionesses' journey, especially during the 2022 euros was full of determination, resilience, and a drive not only from Sarina their manager but from the whole nation to overcome society's expectations and break records on a global stage like Wembley. They've changed views on a sport that was once just seemed for men into a sport full of empowerment and inspiration for millions of young girls all over the world who not only want to play football but also supporters who can have a sense of unity when watching the games as well.

Stadiums continue to be sell-outs for the women's football teams, including the opening match at Old Trafford for the all England group stage fixtures and then the final with a record-breaking attendance of 87,000 fans that was being the largest crowd for a women's international match ever. The rise of interest in women's football from people all over the county now means the government pledged to increase investments in women's grassroots football like our local clubs Aylesbury United and Aylesbury Dynamos. This is huge for young girls aspiring to be in the sports industry as now they get more opportunities to play for a club showing their resilience and talent.





The role of the media has played a massive part during their historic win, it was both challenging but also inspires the players. The negative and positive attention all players received on social media really shows the ups and downs of being a female involved in the sports industry during the modern day. The media portrayal of the lionesses during the euros very juxtaposed. On the one hand they captured the hearts and changed the beliefs of millions on women's football. The media was also spreading the word of their huge success and made them the nation's heroes. They had so much praise and gratitude from fans and there was a newfound attention into the women's game. After the tournament, the women's super league (WSL) saw an increase in sponsorships to the league and more broadcasting deals, most games were now being shown on mainstream channels and made them visible to a wider audience. To the players this support they received was making their hard work and dedication pay off.

However, the media's impact wasn't entirely positive. Throughout the tournament, some players spoke about the pressure of being in the public eye, with the spotlight sometimes focusing on their personal lives instead of football. In the aftermath of their victory, while many media outlets celebrated their success, others still focused on negatives about their gender, comparing them to the male England team or asking them questions in interviews the men would never be asked.

So, this international woman's day, we celebrate the lionesses not only for their incredible achievements whilst playing football but also what they have done off the pitch to inspire and educate the next generation of lionesses, showing girls to challenge thoughts on them and stay determined.

## *Did you know?*

In Aylesbury we are the birthplace of two of our Lionesses, Ellen White, who won the 2022 euros and Gill Sayell, who was in the 1971 world cup. Both inspirational women started their football career at Aylesbury united but Gill not only playing for them, but her team also formed the club, with her dad coaching them. Soon, Gill's father left to live in Menorca leaving the girls managerless, so Arsenal took over the club to form the incredible 'Arsenal ladies' Fast forward 20 years later, Ellen had a passion to play football, so she joined the 'mini ducks' (the junior Aylesbury United) Like Gill, her dad was the manager of the team and quite quickly everyone began to admire Ellens skills, leading to Arsenal scouts spotting her, at the age of eight. These women truly show us young footballers who want to be like the lionesses, can go onto win trophies, tournaments for their country and nothing should stop them.

Aylesbury United

**[www.aylesburyunitedfc.co.uk](http://www.aylesburyunitedfc.co.uk)**

Aylesbury United Phone

**01296 487 367**

Aylesbury Dynamos

**[www.aylesburyvaledynamos.co.uk](http://www.aylesburyvaledynamos.co.uk)**



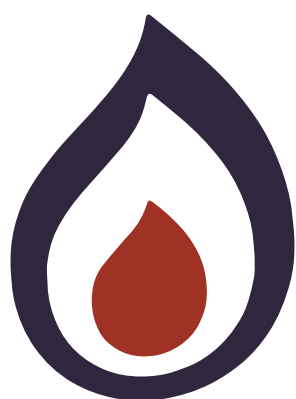
## HUMAN DISEASES ARE TRANSMITTED BY DOG POO.

**Campylobacteriosis** symptoms include diarrhea, cramping, abdominal pain, and fever.

The illness typically lasts one week but for people with compromised immune systems, *Campylobacter* can spread to the bloodstream and result in a life-threatening infection.

Help us to keep you and your children safe and make Berryfields dog poo free!

berryfieldspc.org  
clerk@berryfieldspc.org  
01296 925750



## Tom Garrad Plumbing & Heating

**£10 off**  
a boiler service  
for Berryfields  
residents

 Boiler servicing

 Boiler repairs

 Landlord certificates

 General plumbing

 Unvented hot water systems



07960 445938



tomgarrad@yahoo.com



@tomgarradplumbing



 **WORCESTER**  
Accredited Installer



**BOSCH**

  
REGISTER  
629120



# DEELUXE DETAILS

Order a Grab n Go 6ft or longer and get a simple balloon stack for half price! Offer ends 30th June 2025



We offer affordable prices on:

- Backdrops • Balloon Decor • 4ft Marquee Numbers • Cake Plinths • Foam Sweet Carts and so much more!

ANY SPECIAL OCCASION - WE GOT YOU!

- Birthdays • Baby Showers • Calendar holidays • Engagement Parties • Gender Reveals • Corporate events and more

Happy to do it yourself?

Grab n Go



Balloon Stack



07377 765 785



@deeluxedetails



deeluxedetails.com

VISIT US TO LOOK YOUR BEST!

## BEAUTY, FASHION, AESTHETICS, ANTI WRINKLE TREATMENTS, DERMAL FILLERS

At JAK's Style Saloon, we focus on your personal grooming and your fashion style.

Our goal is to put the "fun" in functional fashion. We know that looking stylish can make your whole day better; that's why we're committed to being your source for the newest trends.

We are qualified in beauty (The Guild of Beauty Therapist trained and accredited) fashion (BA Fashion Management) and Aesthetics offering a range of Female and Male waxing, including but not limited to eyebrows, full leg wax to intimate male and female waxing. Anti wrinkle treatments from one to 3 areas of the upper face. Dermal fillers including lip augmentation, nasolabial folds and marionette lines. We will be offering a huge array of new treatments over the coming months. Please check our website for more details/information on these. (Dr Jack aesthetics are expertly trained and qualified with full CPD accreditation).

We also offer: B12 boosters, Biotin injections for hair loss and Vitamin C boosters, all of which can be administered singularly or in a course over a series of weeks.

We provide a bespoke image consultancy, personal fashion style in packages and personal shopper service. Our aim is to tailor looks just for you so you can focus on looking and feeling great.

We welcome clients from ALL communities.



1st Floor, Affinity Hair Design, Waddesdon, Buckinghamshire, HP18 0JD  
T: 07519 753381 | E: jamie@jaksstylesaloon.com | www.jaksstylesaloon.com



NEW CUSTOMERS

10% OFF

YOUR FIRST FULL PRICED TREATMENT

WWW.JAKSSTYLESALOON.COM



\*Aesthetic treatments only

# Pump Track *by Pete Bowcock*

It's been a good few months now since the pump track was completed, we've still got some more work to do with some track paint and signage but the construction and drainage are holding up very well. The beauty of tarmac pumps tracks is the minimal maintenance needed to keep the tracks in top condition!

It's been brilliant seeing the vast amount of local kids enjoying this new facility and discovering the fun that can be had on two wheels, everyone from complete newcomers to older riders enjoying a pump around the purpose built course.

The wet and windy days have proved that the track is rideable in all conditions if you can take the onslaught of the weather, however once the sun is a more constant feature, we will hopefully be able to host an open day with some inspiring riders able to show off what's possible on this excellent course. We will keep you all posted!

Please bear in mind that you should always wear a helmet when riding a bike, scooter or a skateboard. Speeds quickly pick up on pumptracks and a sudden stop on tarmac can be devastating. Every good rider (even professionals) wear helmets.



Also bear in mind electric vehicles are not to be used on the track, it is NOT designed for it and the speed difference and weight of such vehicles hugely increases the risk of danger to kids and adults alike. The use of these vehicles will also decrease the chances of other such facilities being built. Use them as the law intends, on private ground. Not in public.

We hope you're all enjoying the track and see it as a positive thing for our community, come say hi and if you need any tips don't be afraid to ask, nearly all users are friendly and stoked to have more people using the track!







## Personal Training, Women's Warrior Workouts & Cycle Classes in Berryfields

Maximise your potential, whether it's:  
Fat loss, muscle growth, body composition,  
general fitness or wellbeing and mindset

SIMPLY  
F.I.T.T.



SIMPLY  
F.I.T.T.

With over 18 years of experience we are  
confident we can help you from our  
private studio gym.

We offer:

- 60 minute Personal Training sessions
- 30 minute Women's Warrior Workouts
- 30 minute cycle classes
- 60 minute Life Coaching sessions

**We hope to see you soon**

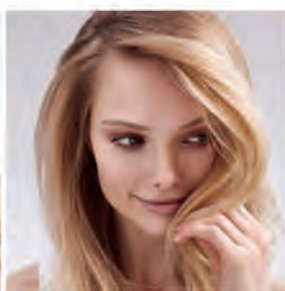
[www.simplyfitt.com](http://www.simplyfitt.com) | [james@simplyfitt.co.uk](mailto:james@simplyfitt.co.uk) | [louise@simplyfitt.co.uk](mailto:louise@simplyfitt.co.uk)



# AFFINITY

## HAIR DESIGN

Professional Styling & Hair Salon



Affinity Hair Design  
provides professional  
hair styling and a  
premium salon  
experience whilst being  
situated in the scenic  
Waddesdon High Street,  
making for a relaxing  
experience whilst in the  
hands of our  
experienced  
hairdressers.

Cut & Blow Dry |  
Colouring | Children |  
Barbering ... and many  
more!



62 High Street  
Waddesdon  
HP18 0JD

01296 658875

[www.affinityhairdesign.co.uk](http://www.affinityhairdesign.co.uk)

## 50% OFF

For new customers only\*

\*Terms and conditions apply (cut  
and blow dry, use code NC50)



# KC HOGAN

BUSINESS  
SERVICES

## ACCOUNTANTS & TAX ADVISORS

- Accounts for Sole Traders and Companies
- Self Assessment
- VAT
- Bookkeeping
- Payroll

To find out how we can help, email  
[sean@kchoganbusinessservices.co.uk](mailto:sean@kchoganbusinessservices.co.uk)  
or call 07817 415 259



XYZ Music Academy provides high quality music tuition across  
Buckinghamshire in both private and school based scenarios. Whether you're a  
beginner or professional musician, XYZ has something for all ages and abilities.

[www.xyzmusicacademy.com](http://www.xyzmusicacademy.com)

Tel: 01296 534032

Email: [admin@xyzmusicacademy.com](mailto:admin@xyzmusicacademy.com)



# Oxford Archaeology:

## *The history that lies beneath Starbucks*

Many of you will have seen, if not used, the Starbucks Drive-Thru on Sir Henry Lee Crescent, which opened just before Christmas. What you may not know is that, underneath the coffee-house, are archaeological remains that formed part of a wider prehistoric monumental landscape.

Before construction on the Starbucks outlet could begin, the developer, DNL Properties Ltd, commissioned archaeologists from Oxford Archaeology to carry out an archaeological excavation of the site. Given that previous archaeological work across Berryfields had uncovered the remains of prehistoric fields, Iron Age settlement and part of the Roman town that developed along the Roman road of Akeman Street (still partially followed by the modern A41), there was a good chance that archaeological remains existed on the site of the new Starbucks. An archaeological investigation was therefore required as a condition of planning permission.

Initially, the archaeological team began the work by monitoring the stripping of the topsoil across the site by mechanical digger. The archaeologists found that the area now covered by the car park entrance had been significantly disturbed by earlier construction work associated with the Berryfields development. Consequently, no evidence of any archaeological remains that might have once existed there had survived. It was, however, a different story in the area now underneath the Starbucks building and the road and car parking around it. There, archaeological remains were well-preserved, and this led to a detailed excavation.

So, what did the archaeologists find? Flint tools that were collected, such as blades for cutting and an adze for chopping wood, indicate that the area was visited by nomadic people in the early Mesolithic period (approx. 10,000 to 7000 BC), who came to edge of the River Thames to hunt animals, gather food and other resources, and make or repair tools and clothing. More people arrived during the early Neolithic period (approx. 4000–3400 BC), the archaeologists having found fragments of the pottery jars they left behind.

The most exciting discovery was a line of pits, which were dated by fragments of pottery found within them to the late Bronze Age (approx. 1200–800 BC). Ten pits were found, but there may have been more, the alignment potentially continuing beyond the edge of the excavation area. Another pit alignment was found during previous excavations in an area close to where the Miller and Carter Steakhouse now stands, but there is no evidence to suggest that the two alignments met. Pit alignments like these are known in other parts of central and eastern England and are thought to have functioned as territorial boundaries or a means to control access to rivers or other natural resources. The Starbucks alignment represents the latest phase of a monumental Bronze Age landscape close to the River Thames. Two, possibly three, ring-shaped ditches, marking the position of human burials, as well as a boundary ditch, were recorded nearby during the earlier Berryfields excavations.

After the Bronze Age, there was a gap in activity at the Starbucks site until the late Iron Age or early Roman period (approx. AD 1–100), or possibly the late Roman period (approx. AD 250–400), when a pair of parallel ditches, functioning as drainage ditches flanking a trackway, was dug. The trackway allowed farmers to move livestock between fields or for the inhabitants of farmsteads on the edge of the Roman town, whose centre lies to the west of Aylesbury Vale Parkway, to reach the river or Akeman Street. After the Roman period, the landscape remained largely agricultural until the development of Berryfields, settlement having moved during the medieval period to Quarrendon, Fleet Marston, and, of course, Aylesbury.



The construction of the Starbucks Drive-Thru has provided a fantastic opportunity to discover more of the fascinating history of the Berryfields area. If you want to know more about the discoveries at Starbucks, then you can download the report from Oxford Archaeology's digital library, Knowledge Hub: <https://knowledge.oxfordarchaeology.com/library/12867>

The results of the earlier excavation at Berryfields (which included the rare discovery of a complete chicken's egg dating to the Roman period, the news of which hit the headlines across the world) has been published in a book, which can also be downloaded free from Knowledge Hub: <https://knowledge.oxfordarchaeology.com/library/6980>

***Edward Biddulph***  
Oxford Archaeology



*The complete chicken's egg, dating back 1700 years to the Roman period, that was found in the southern part of Berryfields during excavations in 2010. It appears to be the oldest intact (and non-fossilised!) egg recovered from an archaeological context known in Britain. The egg is now in the care of Discover Bucks Museum.*



*One of the flint blades from the site. This tool would have been used like a spearhead for hunting or like a knife for cutting and preparing food.*



*Photo of the site during excavation. Note the dark lines in the soil that mark the position of the trackway ditches and the circular patches of dark soil between the ditches that indicate the pits within the alignment.*



# Roman Park Tennis Courts



**Berryfields**  
Parish Council



# OPEN FOR ALL!

Roman Park boasts two fantastic tennis courts that are available for the local community to book and use. Tennis is a great form of exercise and an amazing sport. Anyone can play; whatever your motivation or ability, from all communities and backgrounds.

At any age and for a whole lifetime, tennis provides physical, social and mental rewards both on and off the court. Best of all, it's fun and a great way to spend time with friends and family.

Courts are available to book throughout the year. You can become an annual tennis pass member for just £45 and enjoy free court bookings 365 days a year, without any extra hidden costs. Or if you just like to play from time to time with friends and family you can book for as little as £5 per hour for a one-off cost.

Once you've booked a court, you'll be sent a unique pin code which will gain you access to the courts via the gate access system, guaranteeing your court will be ready and waiting for you when you arrive. Courts are available to book via the LTA website – [www.lta.org.uk/book](http://www.lta.org.uk/book)



# We are seeking: Park Tennis Activators

We are hoping to introduce a new weekly free session to Roman Park this spring called **Barclays Free Park Tennis**.

Barclays Free Park Tennis is a free, organised tennis session, delivered weekly on a Saturday or Sunday morning from 10–11am.

The aim is simply to organise a fun session that appeals to people who fancy giving tennis a go or who have not played in many years. It's suited to adults, children (8+) and families.

All equipment is provided so it's just a case of turning up and enjoying your time on court.

Sessions are facilitated by trained activators who organise fun games and tennis exercises helping others to get active and enjoy tennis on their local courts.

## We are seeking new Park Tennis Activators to start sessions at Roman Park this year

Free online activator training is provided, plus all activators receive a hoodie and an equipment bag to help run the sessions.

If you think you think you might be able to support the delivery of fun & engaging tennis sessions at Roman Park then get in touch with [clerk@berryfieldspc.org](mailto:clerk@berryfieldspc.org) and we will help you on your way to inspiring a new group of tennis players.

Alternatively please visit [www.lta.org.uk/roles-and-venues/volunteers/free-park-tennis/](http://www.lta.org.uk/roles-and-venues/volunteers/free-park-tennis/) where you will find out more information about how to become a Barclays Free Park Tennis Activator and access the free online training.





# An Easter Message from Berryfields' Community Vicar

This year we celebrate 80 years since VE day, a time when there was finally victory, hope and peace in Europe after 6 years of war. I want to write about a different kind of victory but one that took place nearly 2000 years ago.

Roughly a quarter of the pages of the four Gospels in the Bible (Matthew, Mark, Luke and John) cover the last week of the life of Jesus Christ. If you were to write an autobiography of someone would you focus 25% of the space on the last part of their life? Probably not unless of course it was of some specific importance.

So why this whole preoccupation with Christians celebrating Easter, which looks like defeat at Jesus' death but turns into victory at his resurrection? Well, without the events of that first Easter week, we would simply be remembering a great teacher, a charismatic wonder-working holy man, or maybe a failed revolutionary whose memory was kept alive by a few disappointed followers. These same Gospels though, tell us that Jesus said he was much more than this, and place Easter as the pinnacle, the high-point of the Christian faith - His victory over death enables us to be connected with God.

Maybe this Easter as we're munching on our chocolate eggs, which represent new life, we could also remember the amazing events which took place 2000 years ago and how one man put the love of humankind above himself. I'll be praying that as I ponder on this you all have a restful, peaceful Easter break.

This year we are organising an Easter funday on the afternoon of Saturday 19th April on Berryfields Green. There will be lots of fun activities, and farmer Gregory will be bringing along some of his new lambs and you'll get a chance to hear the Easter story. The following day we have an Easter Sunday worship celebration (20th April) in the AVA Primary School hall at 10:30, with more activities and time to reflect on the Biblical Easter story.

May the Easter joy be yours

***Rev'd Gareth Lane***

**(Berryfields Community Vicar and Parish Councillor)**

**[www.churchonberryfields.org](http://www.churchonberryfields.org)**





# Fun family events all year round!



Day Out With Thomas:	Easter, May, Jul, Aug & Oct
Dino Day:	5th May
Steam, Classic & Country Fair:	17/18th May
Fun Day:	8th June
Emergency Services Day:	27th July
Visit from Bluey:	21st Sept... Plus lots more!

**Also, have you visited our Railway Café? Open Monday to Friday 9.30am-2pm for breakfast, lunch, snacks and more!**

**Buckinghamshire Railway Centre  
Station Road, Quainton, Aylesbury HP22 4BY  
[www.bucksrailcentre.org](http://www.bucksrailcentre.org)**



# Young Scouts, Big Hearts: Supporting Berryfields Food Bank

We are the 1st Berryfields Scout Group, offering boys and girls aged 4 to 14 the opportunity to develop practical life skills, engage in adventurous activities, and give back to their local community.

Recently, we've been gathering donations and raising funds through sponsored events to support the Berryfields Food Bank. We've made sure our young members understand the vital service food banks provide to those in need of extra support.

The Squirrels (ages 4-6) took a step back in time with a "Bob a Job"-style event, where they completed small tasks to earn money. Their leaders then took them shopping to purchase items for the food bank. It was a great learning experience for them, and they raised so much that after filling a shopping trolley, they still had money left to donate!

Our Cubs (ages 8-10.5) took on the most challenging task of all - they chose to do a sponsored silence evening throughout one of their meetings. During the event, they completed various tasks in silence, such as organising themselves by height and alphabetically. It was a fantastic event, and we raised essential funds for the Berryfields Food Bank.

We were blown away by the generous donations of food and toiletries, ranging from pasta to toothpaste! Thanks to the efforts of our young Scouts, I'm confident they've made a meaningful impact on our community.

**Tim Robinson, Cubs Team Leader**



## We need tea makers, activity planners, tidy-uppers and helpers for as little or as much time as you can spare.

We meet every Monday and Tuesday evenings to help our 4 to 14-year-olds get going, get thinking and get stuck into all kinds of things to give them skills for life. Every now and then that may well mean using a compass, but more often than not it's about confidence, speaking up, thinking on their feet and going for it. Can you help?

**1stberryfieldsscouts.org.uk**  
**#SkillsForLife**



**Scouts**  
1st Berryfields



# STORYWRITING COMPETITION WINNER

A huge thank you to everyone who submitted an entry to the story-writing competition! We were amazed by the incredible talent and fascinating stories. It was a tough decision, but we are delighted to announce the winner...

## CASSIA DAWSON

An exceptionally unique and creative story– truly transported us back in time!



Dear Diary,

So, this is how it started: I was outside eating a snack, when I saw a strange, glowing fruit dangling on a tree in front of me. I ate it. Why, I don't know. But I did. It felt bubbly on my tongue and then...BOOF! I found myself, probably, 65 million years in the future. Man, it was a strange place! It had towering blocks and smoke clogged the air. There were little things scuttling around with two arms, two legs, but NO tail! It was kinda spooky! And, they were small, those things. Absolutely TINY, I almost stepped on a bunch of them; they weren't even as high as my knee! The poor things looked totally TERRIFIED of me, I felt so bad to be honest. I knelt down to try to comfort them, but they obviously thought that I was trying to eat them or something, because they scattered and ran away screaming. Well, now I didn't feel welcome, so I turned to leave. "How do I get home?" I thought. I saw another glowing fruit, hanging from a tree. Into my mouth it went, then BOOF! Home. Boy, I love adventures when you're a dinosaur.





# GCSE Exam Advice

With GCSE exams just around the corner, here are a few top tips for making the most of the remaining time.

## Note Taking



Having detailed notes for each topic within a subject—whether in the form of flashcards or mind maps—is highly important and beneficial. However, if you're short on time, using pre-made notes may be a more efficient option. These can be found on platforms such as Quizlet, Physics and Maths Tutor and Knowunity.

## Revising

The majority of your revision should focus on memorising and understanding your notes, using techniques like spaced repetition, blurting, or flashcards. Consistency is key—aim to dedicate a few hours each day to revision. For subjects like English, reading grade 9 model answers, predicting possible exam questions, and creating essay plans can be especially helpful.



## Testing Yourself

Practice plenty of past paper questions, especially in areas where you struggle. Pay close attention to the mark scheme, as it often requires specific keywords—make note of these to include in your answers. This is particularly helpful for sciences, where questions tend to be repetitive, meaning you're likely to encounter similar ones in your actual exams.

## Exam Season

Stay clear on your upcoming exams to plan your revision effectively. If one paper doesn't go as well as you'd hoped, don't dwell on it—there's often another opportunity to improve, and it shouldn't impact your focus on other subjects. Exam season can feel overwhelming and long, but remember that your friends are going through it too. Consider group study sessions at the library for support and motivation. Push through this period and revise as much as possible—an exciting, well-deserved summer break awaits!

Good luck for your exams!

By Diyaa Ashok



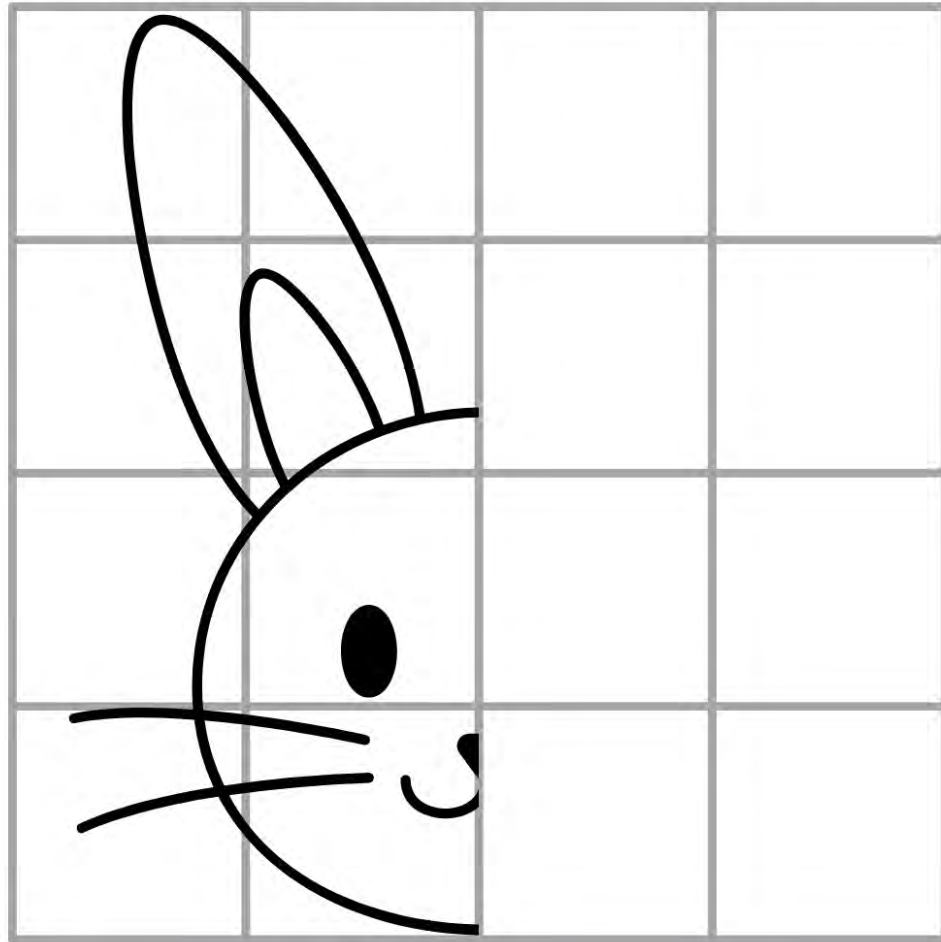




# Kids Corner



FINISH THE PICTURE AND COLOUR IT IN



## WEATHER WATCH

CIRCLE current weather condition



RECORD the temperature



PHOTOGRAPH the weather

PREDICT tomorrow's weather



By Diyaa Ashok





# BERRYFIELDS FISHBAR



**2 LARGE HADDOCK**

**ONLY**  
**£12.00**

**LARGE HADDOCK & CHIPS**

**ONLY**  
**£9.95**



**USE DISCOUNT CODE**

**TENOFF**

**TO GET 10% OFF CLICK &  
COLLECT AND DELIVERY AT**

**[WWW.BERRYFIELDSFISHBAR.COM](http://WWW.BERRYFIELDSFISHBAR.COM)**

TEL: 01296 323267

UNIT 2 CONCORDE SQUARE, AYLESBURY, HP18 1AS

INFO@RPHCATERING.CO.UK